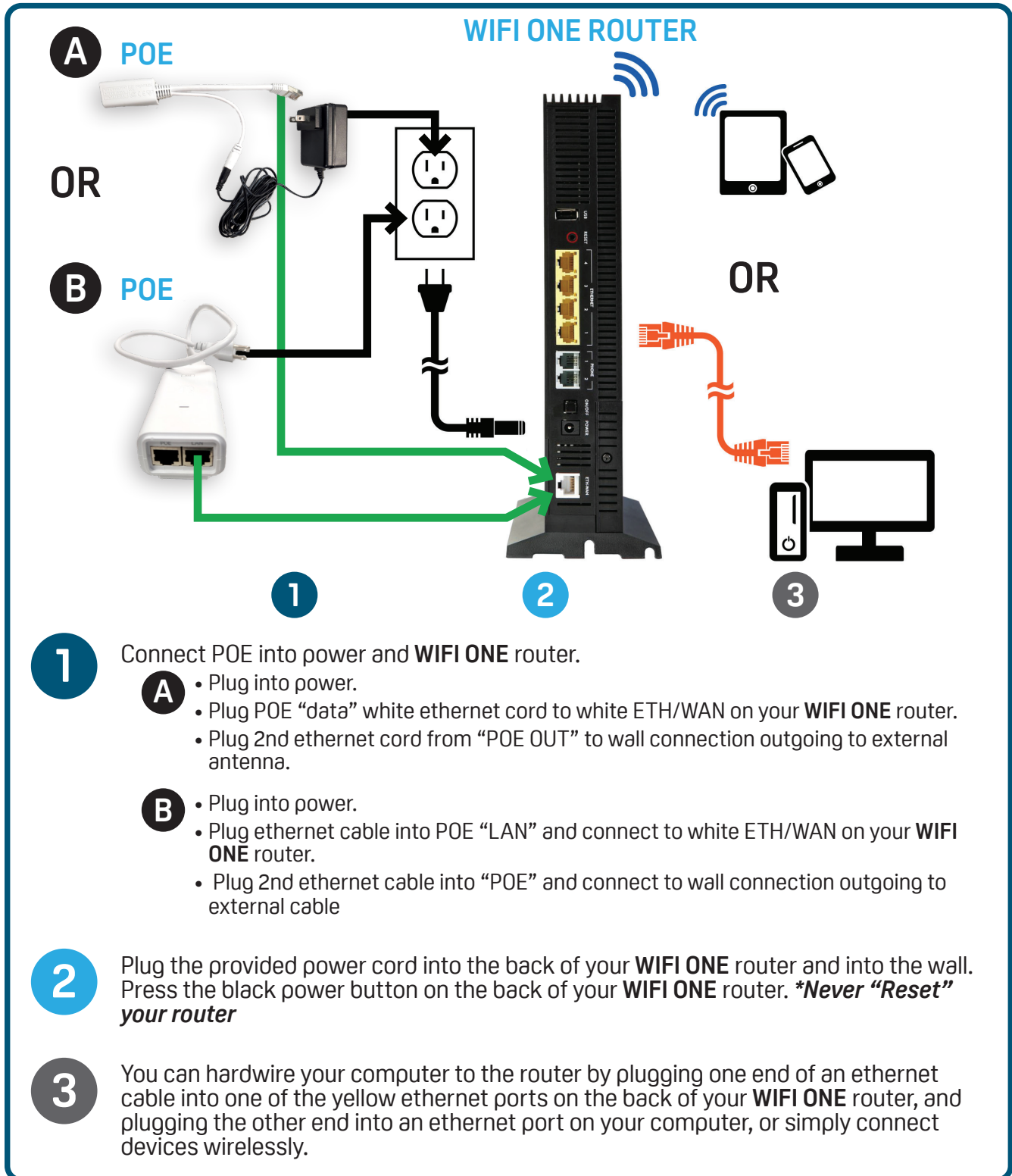




WIFI ONE ROUTER

Wireless Service Installation Guide

Follow these easy steps to install your **WIFI ONE** router.



1

Connect POE into power and **WIFI ONE** router.

A

- Plug into power.
- Plug POE “data” white ethernet cord to white ETH/WAN on your **WIFI ONE** router.
- Plug 2nd ethernet cord from “POE OUT” to wall connection outgoing to external antenna.

B

- Plug into power.
- Plug ethernet cable into POE “LAN” and connect to white ETH/WAN on your **WIFI ONE** router.
- Plug 2nd ethernet cable into “POE” and connect to wall connection outgoing to external cable

2

Plug the provided power cord into the back of your **WIFI ONE** router and into the wall. Press the black power button on the back of your **WIFI ONE** router. ****Never “Reset” your router***

3

You can hardwire your computer to the router by plugging one end of an ethernet cable into one of the yellow ethernet ports on the back of your **WIFI ONE** router, and plugging the other end into an ethernet port on your computer, or simply connect devices wirelessly.